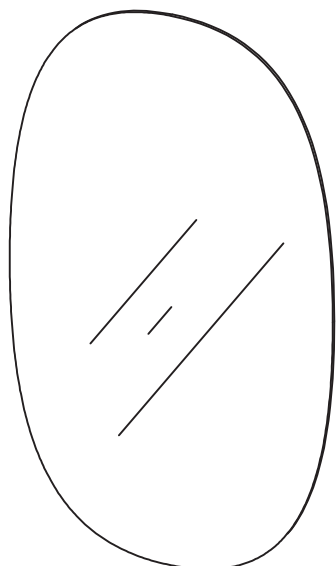
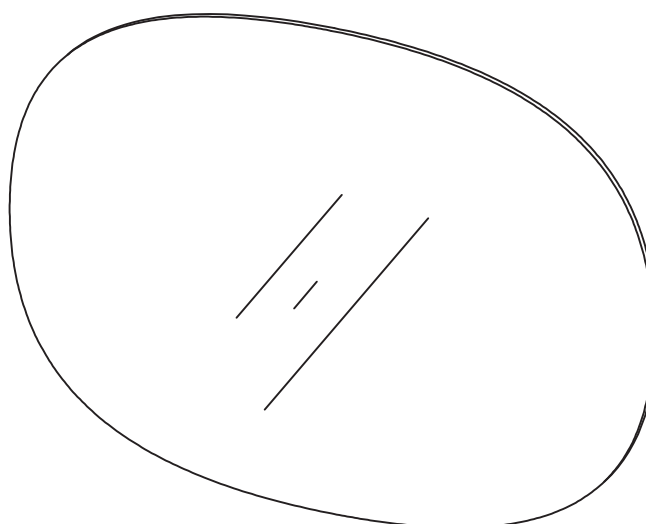


# Hafa®

## ELLIPSE



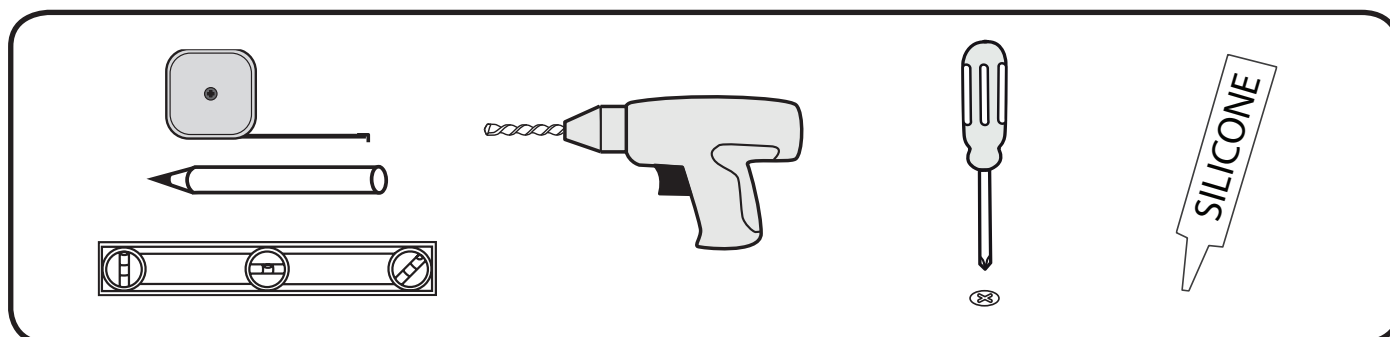
mm	500
Art.nr	1267243



mm	1000
Art.nr	1267244

**CE** IP44

- SE** Denna produkt innehåller en ljuskälla med energieffektivitetsklass E  
**DK** Dette produkt indeholder en lyskilde i energieffektivitetsklasse E  
**NO** Dette produktet inneholder en lyskilde med energieffektivitetsklasse E  
**FI** Tämä tuote sisältää valonlähteen, jonka energiatehokkuusluokka on E  
**ENG** This product contains a light source of energy efficiency class E



# Hafa®

Hafa  
Svarvaregatan 5, Box 525  
SE-301 80 Halmstad  
SWEDEN

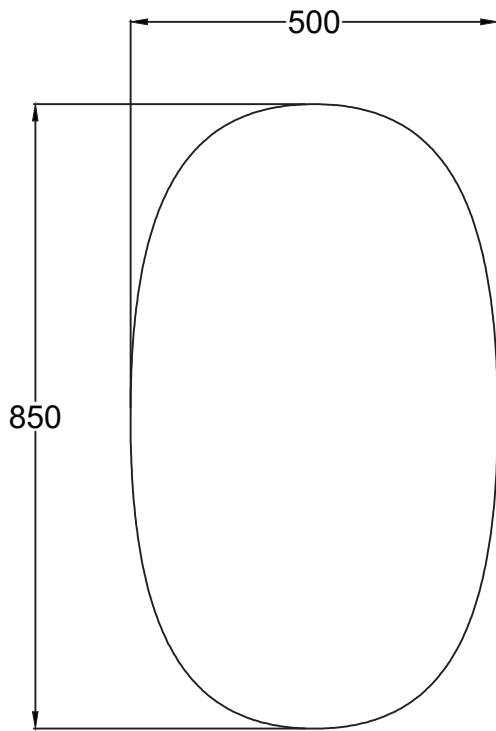
Garanti/Warranty:  
Service, reservdelar/spare parts  
Sweden: Tel: +46 (0)35 15 44 75  
Norway: Tel: +47 (0)69 31 02 30  
Finland: Puh: +358 (0)9 61500940

www.hafa.se  
www.hafa.dk  
www.hafabad.no  
www.hafa.se  
www.hafabathroom.ru  
www.hafa.eu

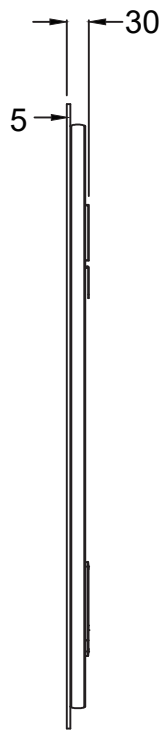
E-mail:  
service@hafa.se  
service@hafabad.no

i

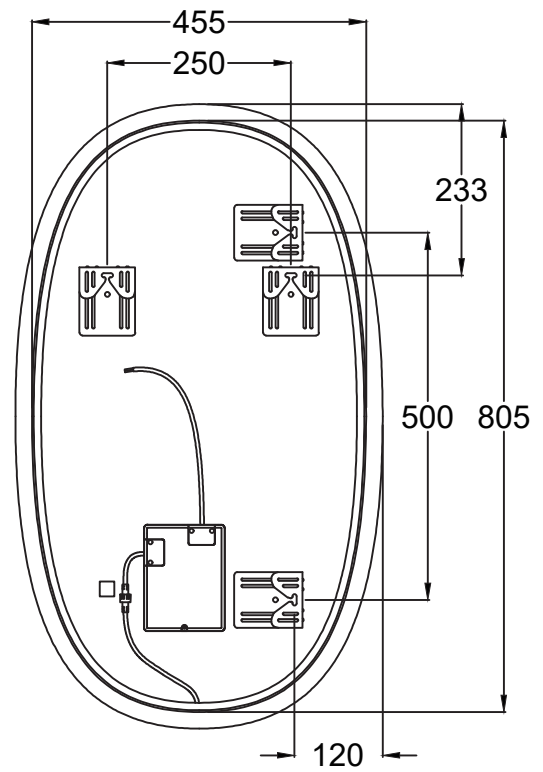
# ELLIPSE



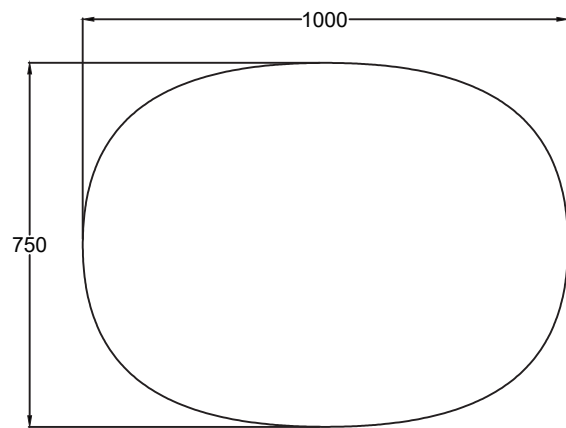
FRONT VIEW



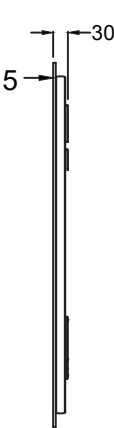
SIDE VIEW



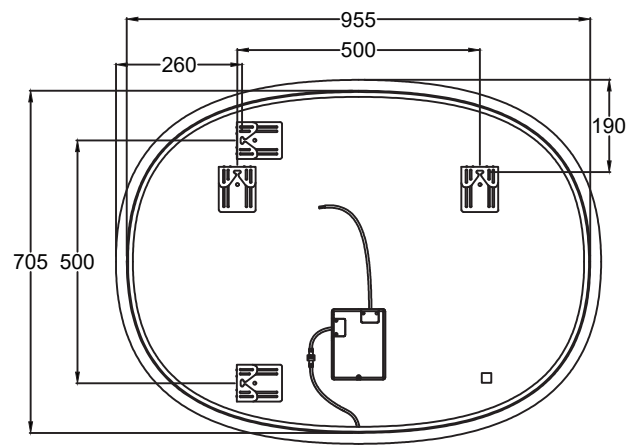
REAR VIEW



FRONT VIEW

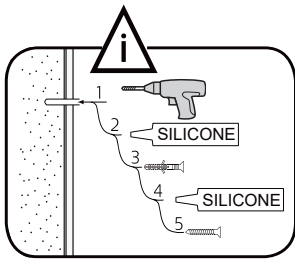


SIDE VIEW



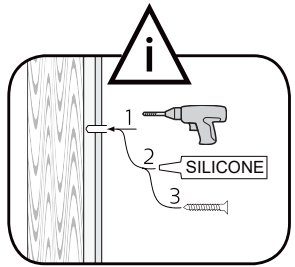
REAR VIEW

# 1



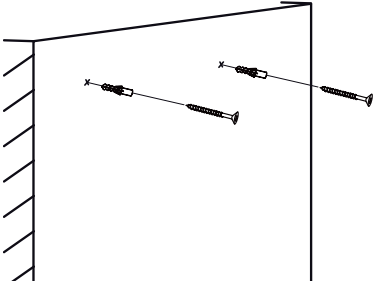
**i**

**OBS!** Använd skruv som passar ditt väggmaterial  
**OBS!** Brug den skruve, der passer til dine vægmaterialer  
**OBS!** Bruk skruer som passer til veggmaterialet  
**HUOM!** Käytä seinämateriaaliin sopivia ruuvia  
**NOTE!** Use screws suitable for your wall material



**i**

**OBS!** Borra aldrig hål i väggen utan att först ha kontrollerat måtten på det aktuella exemplaret.  
**OBS!** Bor aldri hull i veggen uten å først kontrollere dimensjonene av den nåværende element.  
**OBS!** Bor aldrig huller i väggen uden først at kontrollere dimensionerne af den nuværende vare.  
**HUOM!** Ennen poraamista-tarkistathan reikien mittasuhteet tuotteestasi.  
**NOTE!** Before drilling any holes to the wall always check the position for the fixtures for the product itself.

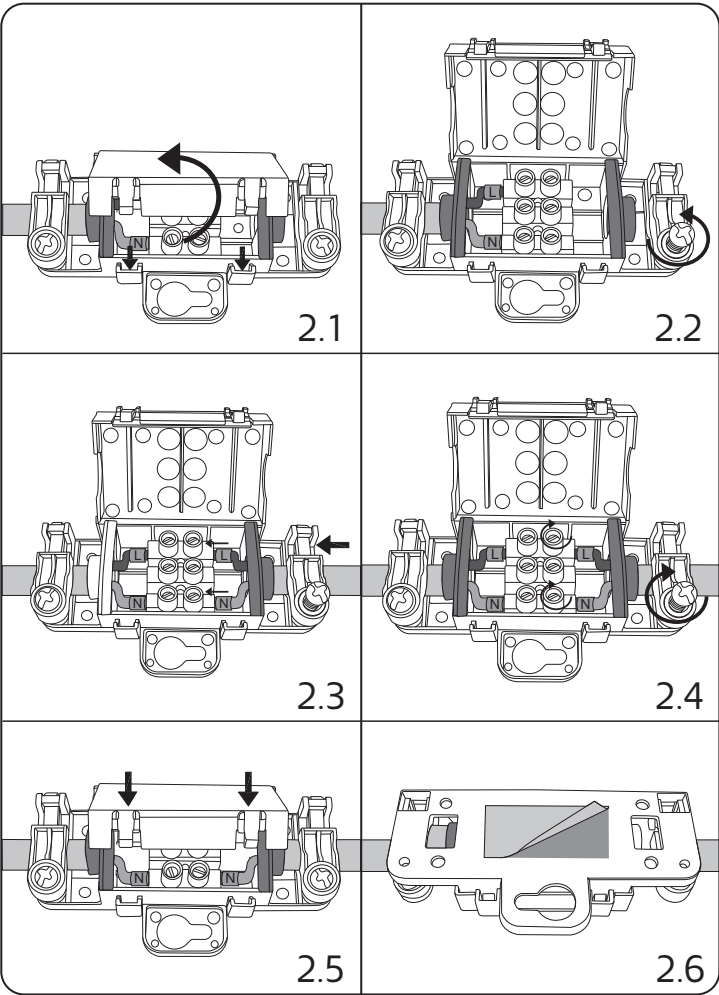
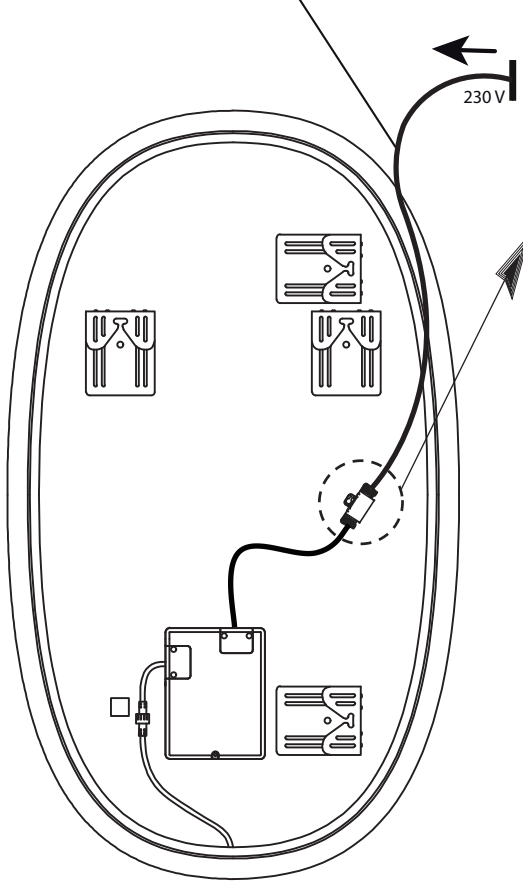


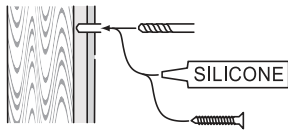
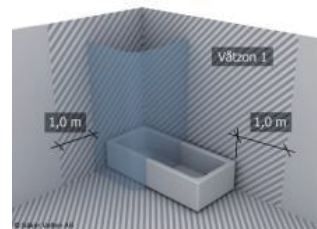
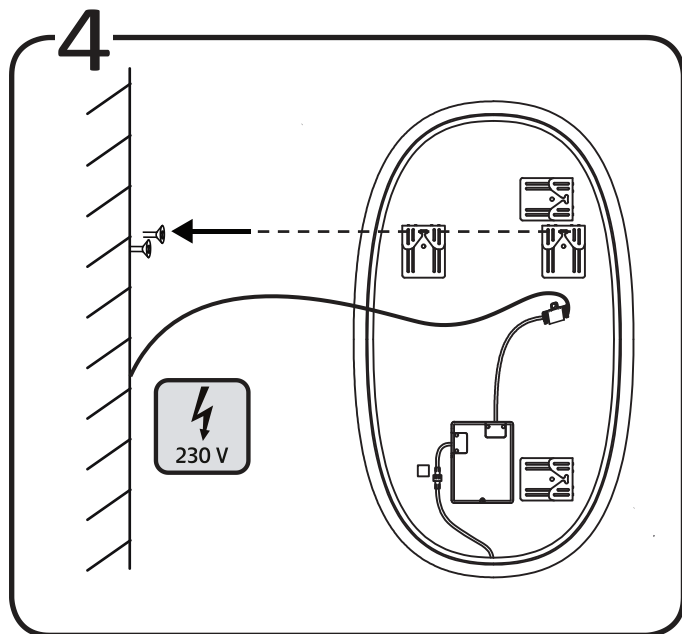
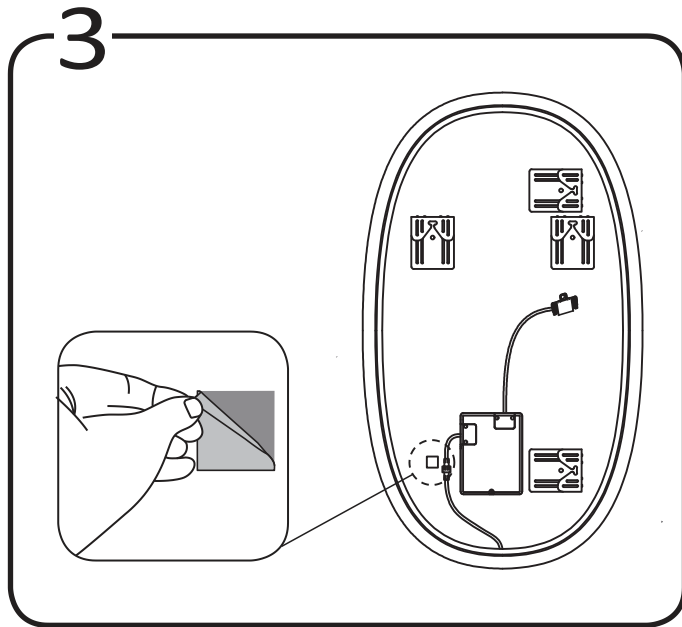
Läs mer på sid 4  
 Read more on page 4

# 2

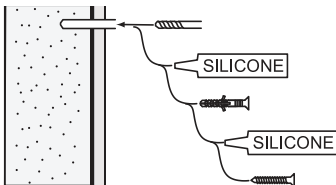
**230 V**

**OBS!** Endast behörig elektriker  
**OBS!** Må bare monteres av autorisert elektriker  
**OBS!** Skal tilsluttes af autoriseret elektriker  
**HUOM!** Vain asianmukainen sähkömies  
**NOTE!** Authorized personnel only





alt.



**SE**

Skruvfästningar ska göras i betong eller annan massiv konstruktion, träreglar, träkortlingar eller i konstruktion som är provad och godkänd för infästning, till exempel skivkonstruktion. Se exempel på godkända konstruktioner på [sakervatten.se](http://sakervatten.se). Material för tätning ska fästa mot underlaget och vara vattenbeständigt, mögelresistent och åldersbeständigt. Krav på tätning gäller både i våtzon 1 och 2.

**GB**

Below are Swedish recommendations:  
Screw fastenings should be made in concrete or other solid structure, wooden studs, wooden noggings or in structures that have been tested and approved for fastenings, for example a sheet construction. See examples of approved constructions at [sakervatten.se](http://sakervatten.se). Sealing substances must fixate to the materials it aims to seal, be waterproof, mould-resistant and age-resistant. Requirements for sealing apply in wet zones 1 and 2.

**Hafa**<sup>®</sup>

Hafa  
Svarvaregatan 5, Box 525  
SE-301 80 Halmstad  
SWEDEN

Garanti/Warranty.  
Service, reservdelar/spare parts  
Sweden: Tel: +46 (0)35 15 44 75  
Norway: Tel: +47 (0)69 31 02 30  
Finland: Puh: +358 (0)9 61500940

[www.hafa.se](http://www.hafa.se)  
[www.hafa.dk](http://www.hafa.dk)  
[www.hafabad.no](http://www.hafabad.no)  
[www.hafa.se](http://www.hafa.se)  
[www.hafabathroom.ru](http://www.hafabathroom.ru)  
[www.hafa.eu](http://www.hafa.eu)

E-mail:  
[service@hafa.se](mailto:service@hafa.se)  
[service@hafabad.no](mailto:service@hafabad.no)